

RTConnect.Net Self Help Installation Guide

Windows 2000 and Windows XP

RTConnect.Net Self Help Installation Guide assumes Network Interface Card (NIC) has already been installed.

Before you begin computer setup:

Remove ADSL Modem from package and lay it and all other components out so they may be easily retrieved.

You should have the following:

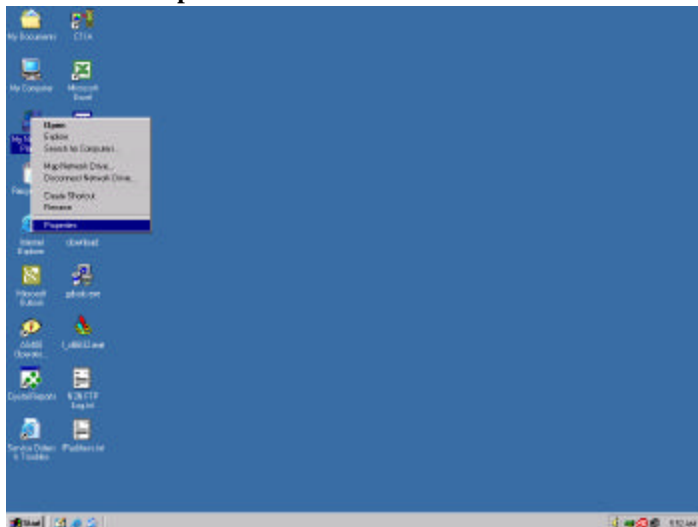
- DSL Modem
- Power Cord
- Phone Cable
- Ethernet Cable

Place the modem in a location that will allow all attachments to reach the back of your computer as well as be easily accessible to you.

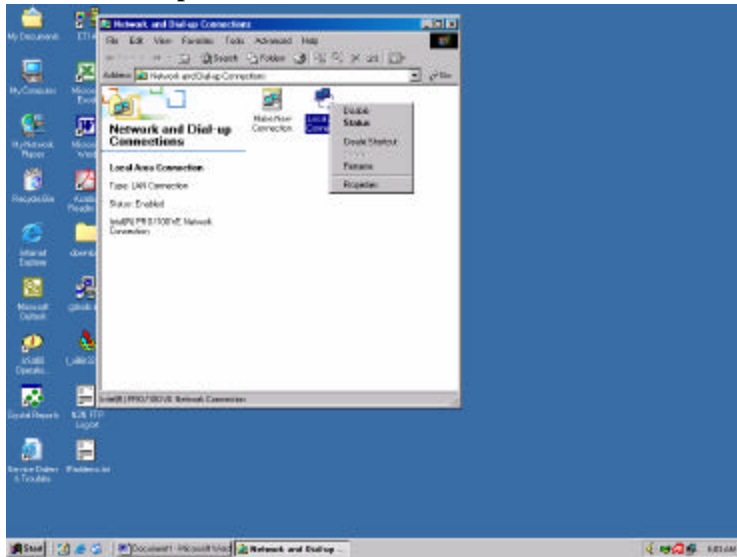
1. Plug power cord into a standard 120V electric receptacle or power strip/surge protector.
2. Plug the other end of the power cord into the appropriate location on the back of the Modem.
3. Plug the telephone cable into the wall jack.
4. Place the other end of the telephone cable into the receptacle on the back of the modem labeled “LINE” or “ADSL.”
5. Plug the Ethernet cable into your Network Interface Card (NIC)/Ethernet Port (Oversized phone jack on back of computer). If you are unsure as to whether or not you have a NIC card, refer to your computer’s user guide for additional information.
6. Plug the other end of the Ethernet cable into the receptacle on the back of the modem labeled “ENET” or “ETHERNET” or “10/100 Base-T.”

Now you are ready to begin configuration of your computer.

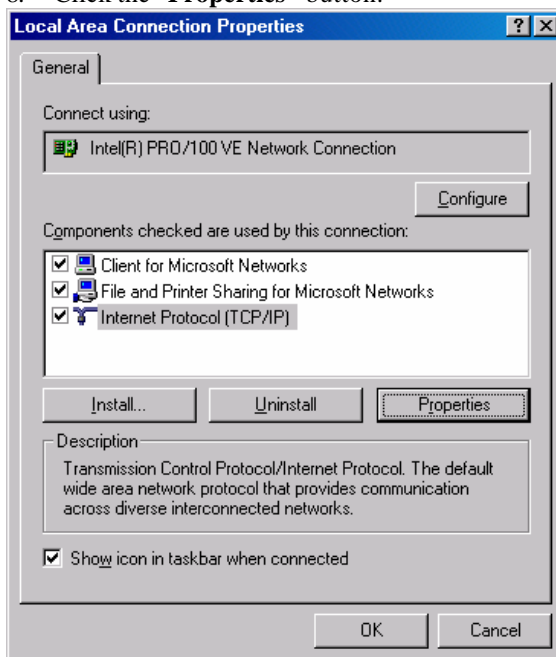
1. Turn on your computer.
2. Locate the shortcut on your computer screen labeled “**My Network Places.**”
3. Right Click on “**My Network Places.**”
4. Select “**Properties.**”



5. In the window that opens, Right Click on the icon labeled “**Local Area Connection.**”
6. Select “**Properties.**”



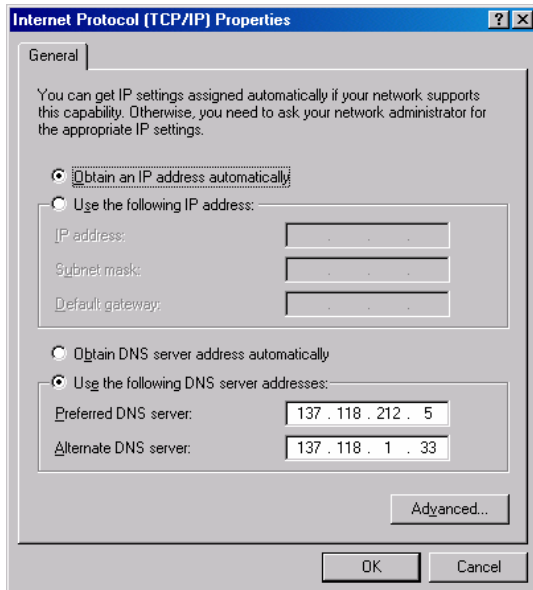
7. In this window, locate the entry labeled “**Internet Protocol (TCP/IP)**” and click it once so it is highlighted.
8. Click the “**Properties**” button.



9. This will open another window. Click the buttons labeled “**Obtain an IP address automatically**” and “**Use the following DNS server addresses.**” NOTE: If you want, you can also choose “**Obtain DNS server address automatically**” instead of “**Use the following DNS server addresses**”. Either option will work.

10. Type the following string of numbers into the appropriate location:

- Preferred DNS server: **137.118.212.5**
- Alternate DNS server: **137.118.1.33**



11. Click “OK.”

12. Click “OK” again.

13. Close the “Network and Dial-Up Connections” window.

14. Double click on the “Internet Explorer” short cut on your computer.

15. Click the “STOP” button located in the tool bar at the top of your screen.

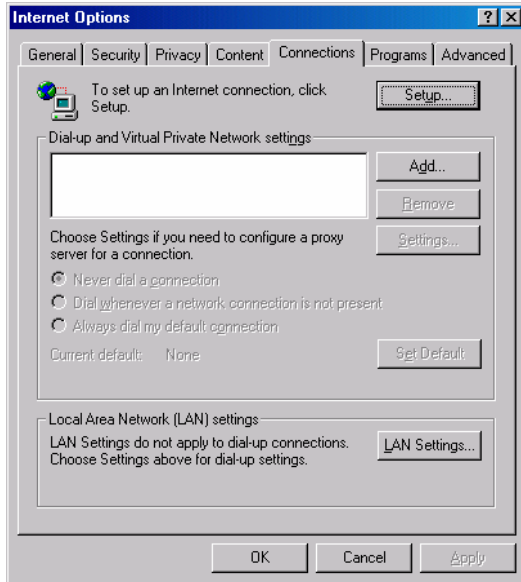
16. Click on “Tools.”

17. Click on “Internet Options.”

18. Click on the “Connections” tab.

19. Click on the button labeled “Never dial a connection.”

20. Click on “OK.”



21. Click the “Refresh/Reload” button or the “Home” button located in the tool bar at the top of your screen.

You are now surfing the information superhighway using rtconnect.net’s DSL technology!